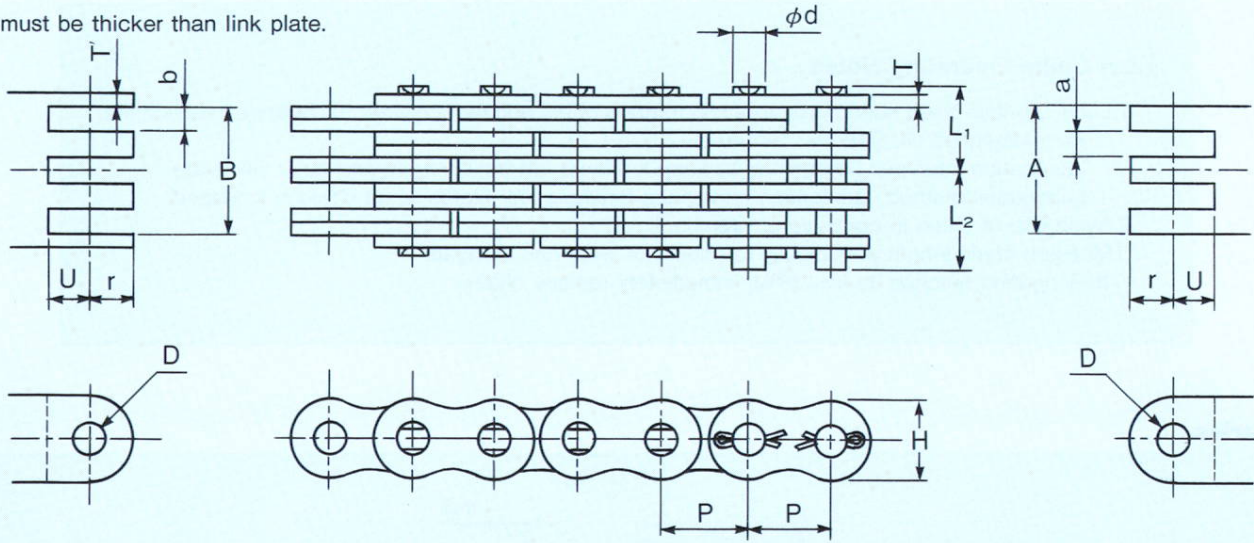


BL Series

T' must be thicker than link plate.



K.C.M chain No.	Pitch P	Plate			Pin			Min. tensile kN (kgf)	l-m chain (kg)	End connector						
		Lacing	Thkns (Thickness) T	Width H	OD ϕd	Caulked L ₁	Pinned L ₂			D Min	r Max	U Min	A Max	a Min	B Min	b Min
KCM BL422	12.7	2 x 2	2.0	11.7	5.09	5.20	7.15	23.50 (2,400)	0.59	5.12	6.35	6.35	4.06	—	—	4.41
KCM BL423		2 x 3				6.22	8.18	23.50 (2,400)	0.73				6.09	—	—	6.53
KCM BL434		3 x 4				8.27	10.23	35.30 (3,600)	1.02				10.41	2.29	10.67	4.32
KCM BL444		4 x 4				9.30	11.25	47.10 (4,800)	1.16				12.53	4.41	12.88	4.41
KCM BL446		4 x 6				11.35	13.30	47.10 (4,800)	1.44				16.68	4.50	17.12	6.53
KCM BL466		6 x 6				13.40	15.35	70.60 (7,200)	1.72				21.00	4.41	21.35	4.41
KCM BL522	15.875	2 x 2	2.4	14.6	5.96	6.20	8.90	39.20 (4,000)	0.91	5.98	7.92	7.92	4.75	—	—	5.16
KCM BL523		2 x 3				7.42	10.13	39.20 (4,000)	1.13				7.13	—	—	7.64
KCM BL534		3 x 4				9.90	12.60	58.80 (6,000)	1.56				12.18	2.68	12.48	5.05
KCM BL544		4 x 4				11.15	13.85	78.50 (8,000)	1.78				14.66	5.16	15.07	5.16
KCM BL546		4 x 6				13.62	16.33	78.50 (8,000)	2.22				19.52	5.26	20.03	7.64
KCM BL566		6 x 6				16.10	18.80	117.70 (12,000)	2.66				24.57	5.16	24.98	5.16
KCM BL622	19.05	2 x 2	3.2	17.5	7.94	7.92	11.03	63.70 (6,500)	1.47	7.96	9.53	9.53	6.45	—	—	6.96
KCM BL623		2 x 3				9.55	12.65	63.70 (6,500)	1.82				9.67	—	—	10.31
KCM BL634		3 x 4				12.80	15.90	95.60 (9,750)	2.52				16.50	3.60	16.88	6.83
KCM BL644		4 x 4				14.42	17.53	127.50 (13,000)	2.87				19.85	6.95	20.35	6.95
KCM BL646		4 x 6				17.67	20.78	127.50 (13,000)	3.57				26.43	7.09	27.07	10.31
KCM BL666		6 x 6				20.92	24.03	191.20 (19,500)	4.27				33.25	6.95	33.75	6.95
KCM BL822	25.4	2 x 2	4.0	23.0	9.54	10.40	13.35	103.00 (10,500)	2.40	9.56	12.70	12.70	7.98	—	—	8.59
KCM BL823		2 x 3				12.45	15.40	103.00 (10,500)	2.97				11.97	—	—	12.73
KCM BL834		3 x 4				16.55	19.50	154.90 (15,800)	4.11				20.40	4.44	20.85	8.43
KCM BL844		4 x 4				18.60	21.55	205.90 (21,000)	4.68				24.54	8.58	25.14	8.58
KCM BL846		4 x 6				22.70	25.65	205.90 (21,000)	5.82				32.68	8.74	33.44	12.73
KCM BL866		6 x 6				26.80	29.75	308.90 (31,500)	6.96				41.10	8.58	41.70	8.58
KCM BL1022	31.75	2 x 2	4.8	28.9	11.11	12.30	15.70	141.20 (14,400)	3.56	11.14	15.88	15.88	9.55	—	—	10.26
KCM BL1023		2 x 3				14.75	18.15	141.20 (14,400)	4.43				14.32	—	—	15.21
KCM BL1034		3 x 4				19.65	23.05	215.70 (22,000)	6.17				24.40	5.30	24.93	10.08
KCM BL1044		4 x 4				22.10	25.50	282.40 (28,800)	7.04				29.35	10.25	30.05	10.25
KCM BL1046		4 x 6				27.00	30.40	282.40 (28,800)	8.78				39.07	10.43	39.95	15.20
KCM BL1066		6 x 6				31.90	35.30	423.60 (43,200)	10.52				49.15	10.25	49.85	10.25
KCM BL1222	38.1	2 x 2	5.6	35.0	12.71	14.37	18.38	186.30 (19,000)	5.15	12.74	19.05	19.05	11.24	—	—	12.05
KCM BL1223		2 x 3				17.25	21.25	186.30 (19,000)	6.35				16.85	—	—	17.87
KCM BL1234		3 x 4				23.00	27.00	299.10 (30,500)	8.71				28.70	6.22	29.30	11.84
KCM BL1244		4 x 4				25.87	29.88	372.70 (38,000)	9.91				34.52	12.04	35.32	12.04
KCM BL1246		4 x 6				31.62	35.63	372.70 (38,000)	12.37				45.96	12.26	46.98	17.87
KCM BL1266		6 x 6				37.37	41.38	559.00 (57,000)	14.77				57.80	12.04	58.60	12.04
KCM BL1422	44.45	2 x 2	6.4	40.7	14.29	16.35	21.05	235.40 (24,000)	6.69	14.31	22.23	22.23	12.74	—	—	13.66
KCM BL1423		2 x 3				19.65	24.35	235.40 (24,000)	8.29				19.12	—	—	20.26
KCM BL1434		3 x 4				26.25	30.95	387.40 (39,500)	11.50				32.54	7.06	33.23	13.43
KCM BL1444		4 x 4				29.55	34.25	470.70 (48,000)	13.10				39.14	13.66	40.06	13.66
KCM BL1446		4 x 6				36.15	40.85	470.70 (48,000)	16.40				52.12	13.88	53.26	20.26
KCM BL1466		6 x 6				42.75	47.45	706.10 (72,000)	19.60				65.54	13.66	66.46	13.66

NOTES:

1. Dimension "U" excludes rounded area.

2. It is required that end connector is made of alloy steel (SCM435, etc.), and properly heat-treated to hardness of HRC40-45.